

TURBINE DETAILS
PART NUMBER B10004

NOTE: TURBINE MAY BE REMOTELY LOCATED
IN UTILITY CLOSET, MECHANICAL ROOM, ETC.

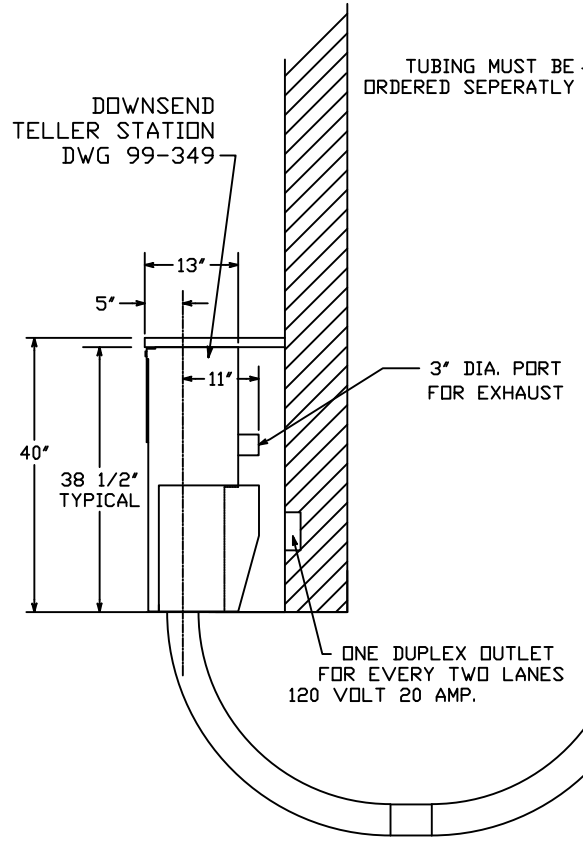
PVC 20" RADIUS BEND
WITH 3" NIPPLE
SUPPLIED WITH SYSTEM

3" FLEX-HOSE PART NUMBER B2948
(CONNECTION BETWEEN TURBINE AND VALVE
CAN BE EXTENDED USING RIGID TUBING)

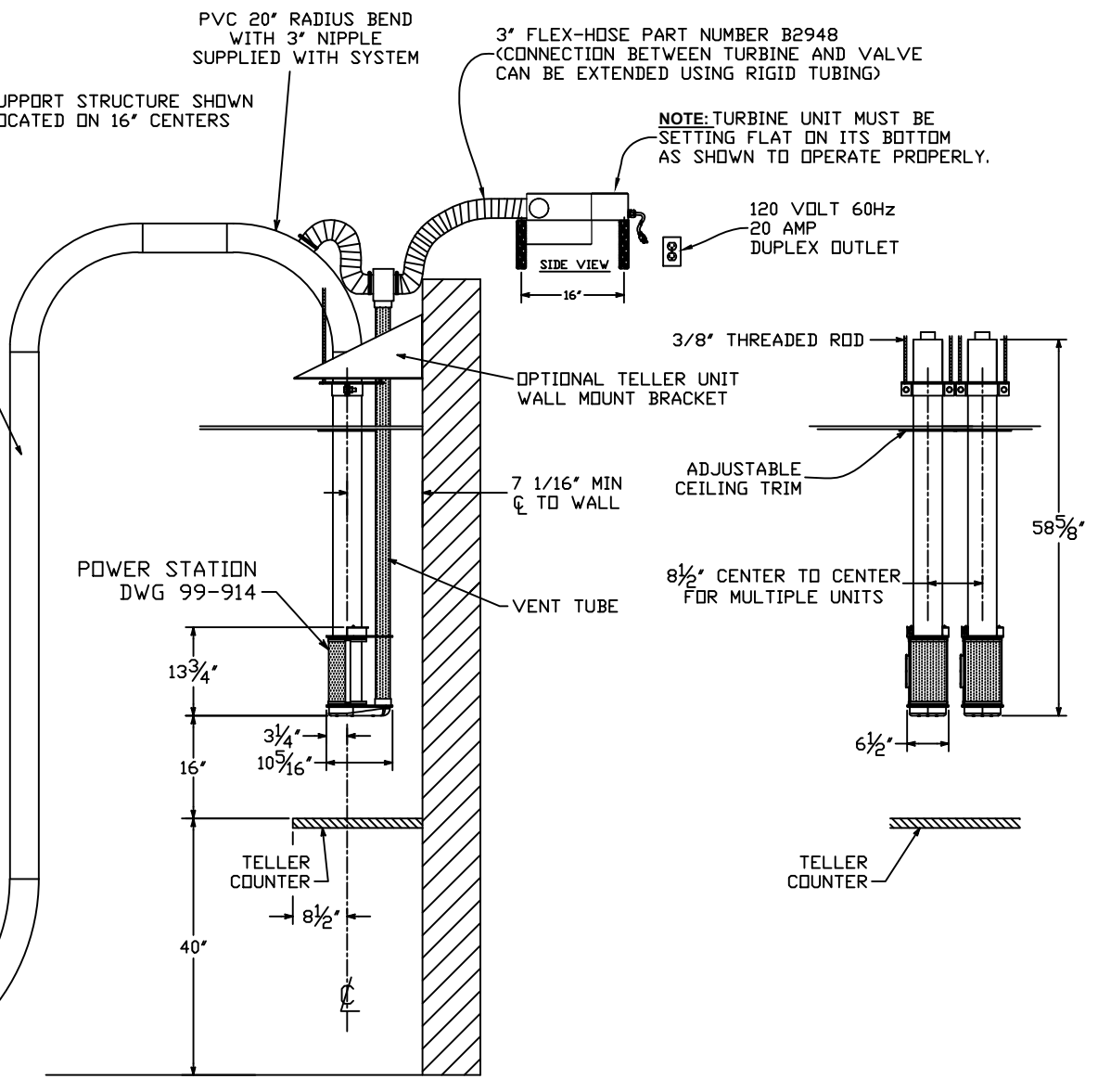
NOTE: TURBINE UNIT MUST BE
SETTING FLAT ON ITS BOTTOM
AS SHOWN TO OPERATE PROPERLY.

120 VOLT 60Hz
20 AMP
DUPLEX OUTLET

SUPPORT STRUCTURE SHOWN
LOCATED ON 16" CENTERS



TUBING MUST BE
ORDERED SEPERATLY



est. 1967 HAMILTON CUSTOM MADE SECURITY	PROPRIETARY AND CONFIDENTIAL THESE DRAWINGS ARE THE PROPERTY OF HAMILTON SAFE CO. AND SHALL NOT BE REPRODUCED, COPIED, USED AS THE BASIS FOR MANUFACTURE OR SALE OF APPARATUS WITHOUT PERMISSION	DESCRIPTION MODEL HT-19 D PNEUMATIC TRANSPORT SYSTEM DOWN SEND, ONE END	
		DRAWING/MODEL NUMBER 99-1024	DATE 10/08/2021